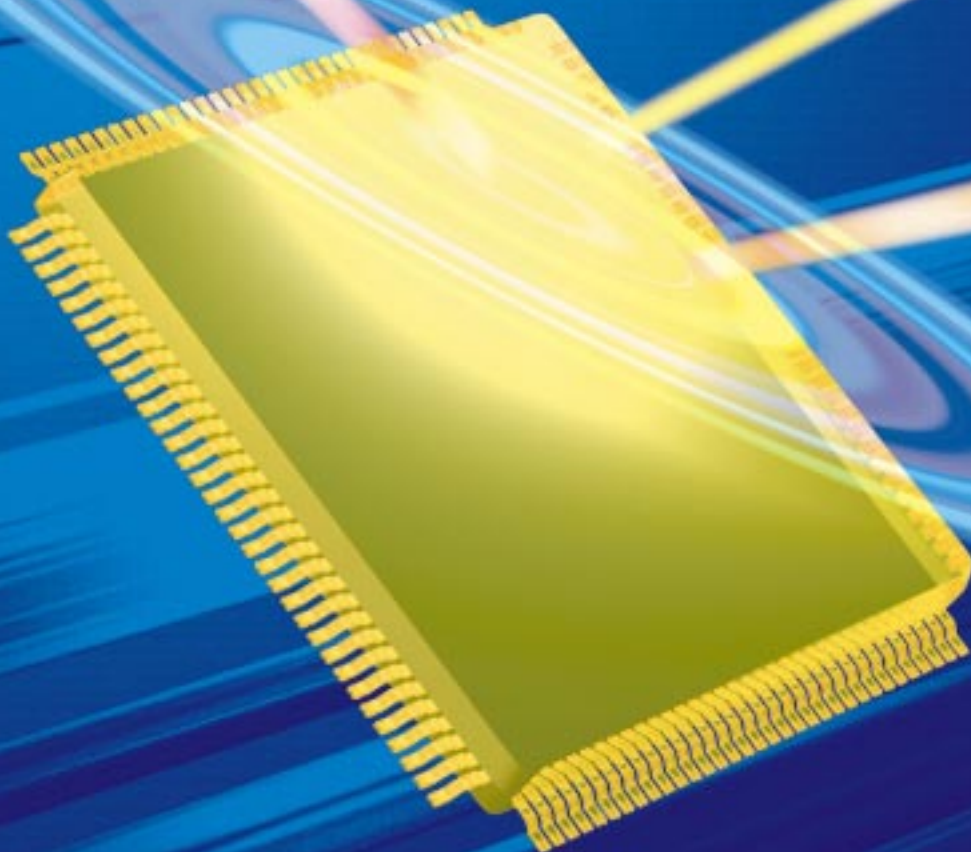


# *NET IMPRESS*

Network Compatible In-circuit Flash Microm Programmer for Embedded Smart Systems



# The NET IMPRESS Family delivers a wide range of Flash Micom programming for development, production and support field.

## NET IMPRESS is a Universal In-circuit Flash Micom Programmer for Programming Various Types of Flash Micoms Soldered on the User System.

The NET IMPRESS Family consists of the following four models specially designed to enable programming in specific fields of application.

Model	Outline	Application Field		
		Development	Production	Maintenance
AF220	Including Ethernet(10BaseT) interface model			
AF210	Standard Model			
AF120	One-touch key model with Ethernet interface			
AF110	One-touch key model			

The combination of NET IMPRESS and dedicated IMPRESS module enable the expanded functions. (Note 1)

Note1: An IMPRESS Module's 3 digits of module code starts from 200 (Fx2xx). Future control modules will be released as sequential members of IMPRESS Module family.

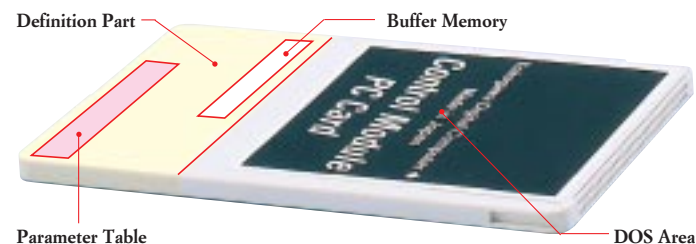


AF120 AF110 Reduced Key Model

## Control Module

The NET IMPRESS control modules give you the freedom and flexibility to program microcontrollers manufactured by different companies. In addition to the extensive line-up of basic modules for AF200, you can also use the IMPRESS Modules that come loaded with various extended functions. You can now program all sorts of different microcontrollers by changing the control modules, or just by exchanging the IMPRESS Module definition or parameters. (Note 2)

Note2: Definition Exchange Function is available for /P4 or larger model.



### • DOS Area

The Following control modules are available for each type of microcontroller (Specify the model code when ordering.)

Model	Flash Memory	DOS Area
/P2 (2M)	~128KB	About 1.7MB
/P4 (4M)	~512KB	About 3MB
/P5 (5M)	~768KB	About 3MB
/P8 (8M)	~1MB	About 6.5MB
/E6 (4M)	~2MB	About 1MB (Note3)

Note3: /E6 is for production line application.

## IMPRESS MODULE

Extra features of NET IMPRESS and IMPRESS Module combination

- Ethernet connection (AF220/AF120)
- IMPRESS Definition Download function (/P4 or larger model)  
This enables you to switch your target micom without swapping the control module. (License for extra IMPRESS Definition can be purchased.)
- One-touch Key Operation  
You can assign the execution sequence of device functions in two one-touch keys on the panel.
- AZ282: F/DF Sheet supports efficient installation of each Programming Condition specified from the Target System.
- Other additional features for more productivity, reliability and ease of use.

## Stand-alone operation

The Stand-alone Operation mode offers you the freedom of portable programming.

- Keypad on the panel enables user-friendly programming.
- You can edit program data in buffer RAM, search for edited data and generate differential files.
- The one-touch key model, AF110 and AF120, are ideally suited to manual programming (production line programming, field service).
- You can also use external signals to start programming via External Input Connector.

## Remote Control Application

NET IMPRESS offers two types of remote control software.

### AZ290:Remote Controller

This is a readymade remote controller that gives you remote control of NET IMPRESS and enables you to modify parameters. It provides easy use of NET IMPRESS with its advanced user interface.

### AZ291:Remote Package

This is a remote controller that possesses an interface (COM interface) for receiving commands from other applications on the PC. You should use this package when you create a custom-made user interface or build an automated programming system.

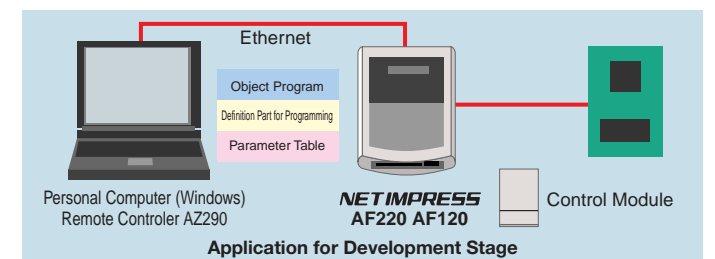
### Lab Applications

For lab applications you can use the AZ290 Remote Controller (for PC/AT).

- You can download files including IMPRESS module definitions.  
This system will easily adapt to changes in the target micom.
- It has a user-friendly user interface, and can be used as soon as you have installed the AZ290 Remote Controller.
- You can also use this system to save whole programming condition such as object files, module definitions etc for Stand-alone Operation use.

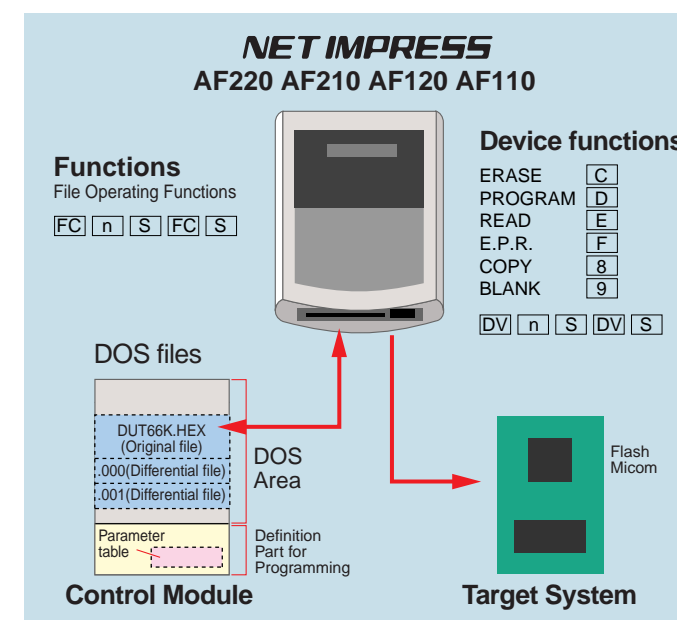
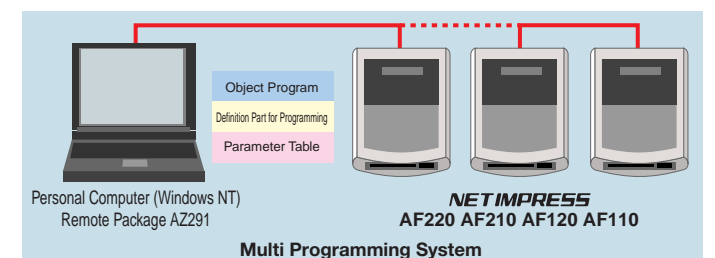


< AZ290 Remote Controller >



## Production Line Applications

- The AZ291 Remote Package will enable you to build a fully automatic and efficient programming system.
- It will now take less time to modify the production line set-up because the system can adapt flexibly to any changes in the target board. (with AZ282: F/DF Sheet generator)
- As this is a widely used programming system you can set up a global protection mechanism to deal with operational errors and defects. This avoids the high costs associated with building multiple protection systems.
- You can also perform simultaneous programming on multiple micoms by saving the programming conditions onto the control modules in the NET IMPRESS. This feature saves programming time.



## NET IMPRESS Main Unit

Model code	Specification
AF220/AC4P	NET IMPRESS Flash Micom Programmer Main Unit with Ethernet Interface (100V-240V AC adapter included)
AF210/AC4P	NET IMPRESS Flash Micom Programmer Main Unit (100V-240V AC adapter included)
AF120/AC4P	NET IMPRESS Flash Micom Programmer One-touch Key Type Main Unit with Ethernet Interface (100V-240V AC adapter included)
AF110/AC4P	NET IMPRESS Flash Micom Programmer One-touch Key Type Main Unit (100V-240V AC adapter included)
AZ210	Standard Target Probe Cable
AZ211	Standard Target Probe Cable
AZ212	Standard Target Probe (AZ210 with unfinished end on the target side)
AZ213	Standard Target Probe (AZ211 with unfinished end on the target side)
AZ221	NET IMPRESS host PC Cable (RS232C, 9pin to 9pin)

## Control Modules

Model code	Specification
Fx0xx (Basic Module)	Basic control module for AF200 and NET IMPRESS series. Can be adopted for derivative micoms by modifying the parameter table
Fx2xx (IMPRESS Module)	Expanded features available with NET IMPRESS main unit. Can be adopted for derivative micoms by modifying the parameter table. By purchasing module license, additional IMPRESS definition part can be downloaded.

Note: Be sure to insert the control module into the NET IMPRESS to use.  
Contact YDC or your local representative for future micom support.  
2MB (/P2) to 8MB (/P8) of size option can be specified.

## Software Tools

Model code	Specification
AZ281	Password file generator
AZ282	F/DF Sheet generator
AZ290	Remote control software (1.4MB FD)
AZ291	Remote control package (1.4MB FD)

## Standard probes for NET IMPRESS

Model Code	Specification	Connector for user's system
AZ210		DX10-28S (1m length)
AZ211		Wireharness Assembly Connector Housing PS-D4C20 Contact PS-SF-C2-1  Test Clip

### [ NET IMPRESS Specification ]

- Communication to target System  
UART: 2400, 4800, 9600, 19200, 31250, 38400, 57600, 76800bps  
CSI: 62.5K, 125K, 250K, 500K, 850K, 1.25Mbps  
( Clock: Output from NET IMPRESS )
- Target System  
MCU Operating voltage: 3V-10% ~ 5V+5%  
Vpp: 12V, 200mA max  
Standard Probes: AZ210 and other probes

### [ Internet Customer Support ]

YDC offers Internet Customers Support through our home page:

**URL: <http://www.ydc.co.jp/micom/index.htm>**

- Supports
  - Various Micom Pack Support (Parameter Information)
  - Software Tools distribution  
Following Software Tools are available from our home page.  
AZ281: Password file generator  
AZ282: F/DF Sheet generator  
AZ290: Remote control software (1.4MB FD)  
(Purchase these Remote Controller when you need the technical Support.)
  - The latest information is provided on our home page.

## YDC Corporation

(Yokogawa Digital Computer)

Instruments Business Division

Keio-Fuchu 1-Chome Building

1-9 Fuchucho, Fuchu-shi, Tokyo, 183-8540 Japan

Phone: 81-423-33-6224 Facsimile: 81-423-52-6107