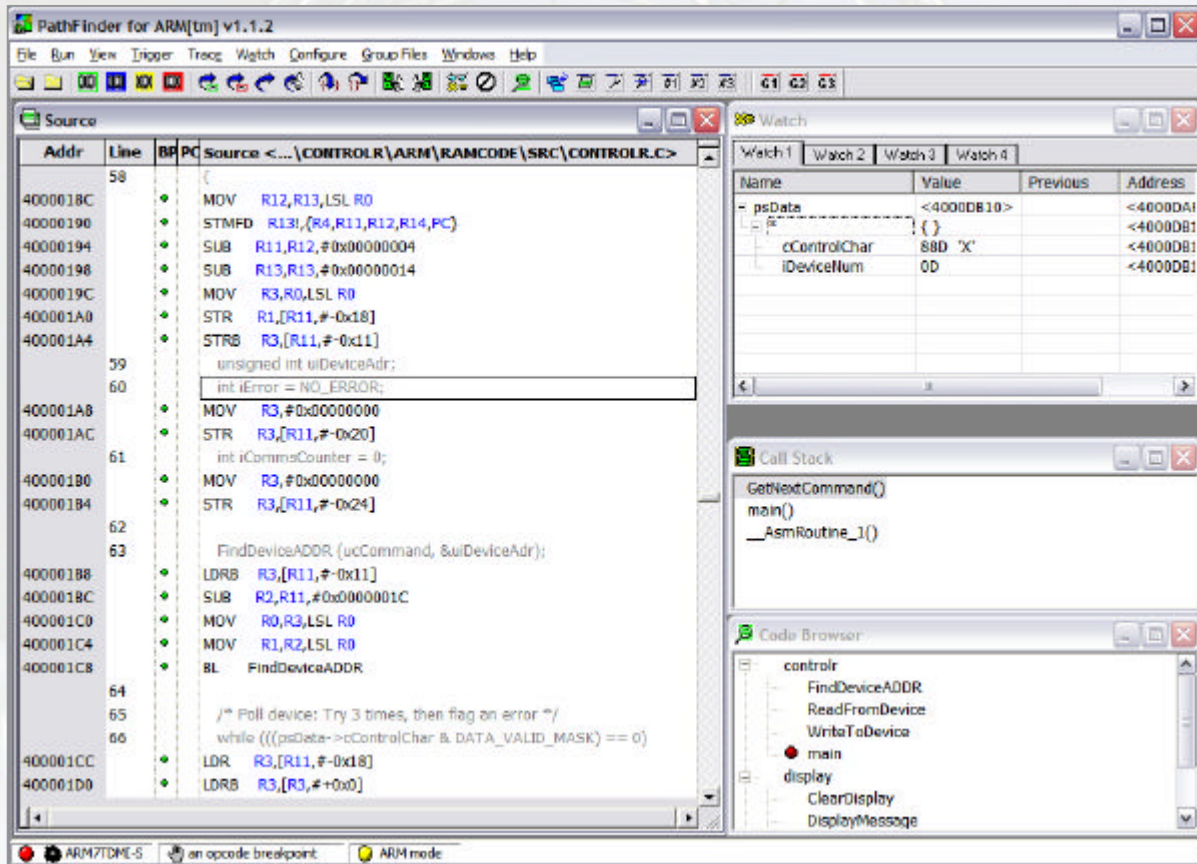


PATHFINDER

Source-Level Debugger for Embedded Microprocessor Development

Overview

Ashling's PathFinder Source-Level Debugger features multiple user-configurable windows, point-and-click, drag-and-drop, hover help and hover data display, splitter windows, menu-bar, button, hot-key and script (macro)-file controls. PathFinder runs on all 32-bit versions of Windows, including Windows9x, 2000, Me, NT, XP.



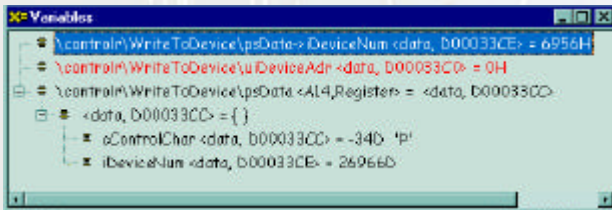
PATHFINDER FEATURES

PathFinder's user-interface utilizes the Windows 9x/2000/Me/NT/XP look-and-feel, to reduce the debugger learning curve and increase user friendliness, while maintaining a consistent style between the debugger and other Windows™ applications. In-Circuit Emulation, Source-level Debug, Simulation, Performance Analysis and Code Coverage are all controlled by PathFinder, thus providing a true integrated view of the embedded development domain.

PathFinder is the user Interface for all Ashling Emulator and Simulator products, including the Ashling Vitra, Genia, Opella and Ultra Emulators. PathFinder supports a wide range of 8-, 16- and 32-bit processor architectures. The highly modular PathFinder debugger can be easily configured to support different targets including Emulators, Evaluation Boards, On-chip Debug Interfaces and Instruction-Set Simulation Models. In addition, PathFinder supports simultaneous debugging of both Multi-core systems (Systems on Chip) and Co-processors.

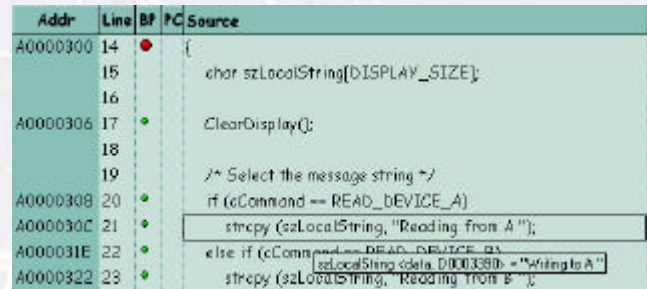
PATHFINDER FEATURE SET

- Operates under all 32-bit versions of Windows™
- Full C and Assembler Source Level debug support
- Full C expression handling support
- Non-intrusive 'On-the-Fly' Variable and Memory viewing during program execution
- Supports all popular C compilers, including Cosmic, Diab Data (Wind River), Green Hills, GNU, High-tec, IAR, Keil, MetaWare, Metroworks and Tasking
- Support for all standard industry file formats (object formats) including COFF, DWARF, ELF, IEEE695 and OMF
- Automatic update and synchronization of all windows after halt from program execution
- Code Browser window allows rapid browsing of loaded program, showing all modules and functions.
- Full run-time control features including: single step, step over, step into, step out of (current function), go and halt.
- Support for software and hardware breakpoints and watchpoints
- Windows for on-chip RAM, external data memory, SFRs, CPU status and Co-processor status
- Full Multi-core and Co-processor debugging support
- All changed Memory and Variable values are highlighted when the program halts



Variables that have changed since the previous halt are shown in Red. Full scope is shown for all variables (in this case all variables are local to the function WriteToDevice() in the module controlr).

- 'Splitter' windows allow you to open up to four distinct views (panes) within a single window.
- Drag & Drop Support (drag a variable from the Source Window to the Variable Window)
- Hover Data Display



In PathFinder's Source window, you can position the mouse pointer (not shown) over the variable szLocalString to automatically open a pop-up window showing the current value of szLocalString.

- Right mouse button pop-up context menu support for all windows
- Powerful C-like script (macro) language to control, monitor and log all emulator functions, for automatic testing of software and hardware.
- Record mode allows automatic generation of scripts
- Most Recently Used (MRU) file list
- RTOS debugging support using the Kernel Debug Interface (KDI) standard. Allows debug support for third party or 'in-house developed' Operating Systems.
- Full support for Trigger and Trace including Bus Trace window (shows low-level 'bus' view) and Code Trace window (shows traced code as C or Assembler)
- Integrated Support for Ashling Software Quality Assurance tools including the STARS Performance Analyzer and CodeScan Code Coverage System
- Ethernet, USB and RS232 connections to host PC

PATHFINDER ORDER CODES

PathFinder is available for all Ashling Emulators. For order codes and detailed specifications, please refer to the appropriate Ashling Emulator datasheet.

DS201 V10

Ashling Microsystems Ltd. is Certified to I.S. EN ISO 9001:2000, NSAI Registration No. 19.09069.

Ashling Microsystems Inc.
18612 Devon Avenue
Saratoga
CA 95070-4646 USA
Tel: (408) 884 3020
Fax: (408) 884 3026
Email: sales.usa@ashling.com

Ashling Microsystems
11 Avenue Charles de Gaulle
95700 Roissy en France
Tel: 01.43.41.06.37
Fax: +353 61 334477
sales.fr@ashling.com

Ashling Microsystems Ltd
Albany House
14 Shute End
Wokingham RG40 1BJ
Tel: 0870 240 5209
Fax: 0870 242 6052
sales.uk@ashling.com

Ashling Microsystems Ltd
National Technology Park
Limerick
Ireland
Tel: +353-61-334466
Fax: +353-61-334477
sales.ie@ashling.com

Distributors in Australia, Austria, Belgium, Canada, China, Cyprus, Denmark, Finland, France, Germany, Greece, Hong Kong, Iceland, India, Israel, Italy, Japan, Korea, Luxembourg, Malaysia, the Netherlands, Norway, Poland, Russia, Singapore, Spain, Sweden, Switzerland, Taiwan, Turkey and USA.