

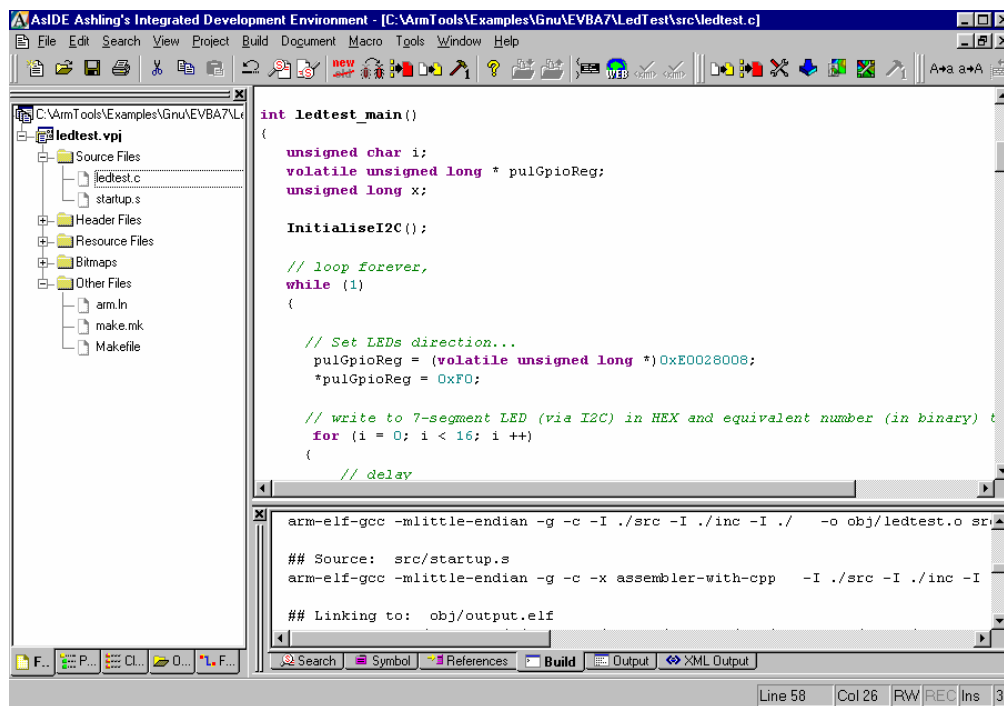
Ashling Software for ARM™-architecture development

Ashling supplies a complete range of tools for ARM™-architecture software development, including:

- **ASIDE-ARM** Integrated Development Environment with project build manager and source-code editor
- **GNU GCC Compiler and Linker** tools
- **PathFinder-ARM C and Assembly Source Debugger**
- **Vitra, Genia and Opella** hardware emulators, providing non-intrusive run-time control together with real-time code execution and data trace

ASIDE-ARM

Integrated Development Environment for ARM™ application development



ASIDE is Ashling's Integrated Development Environment for ARM™ application development.

The **ASIDE-ARM** package, which includes the SlickEdit™ Editor, provides a powerful and convenient development environment for ARM™-architecture applications.

The GNU GCC Compiler and Linker tools, included on the ASIDE-ARM CD, are configured and invoked from **ASIDE**. Compiler and linker switches may be set via user-friendly dialogs.

ASIDE features include:

- Full Project Management support including project and make-file generation
- Context sensitive error browsing for GNU GCC tools output: ASIDE highlights the offending line in the relevant source file
- Direct invocation of Ashling's powerful **PATHFINDER** source-level debugger directly from ASIDE. The current project is automatically loaded and ready for debug.
- Support for Windows XP/2000/Me/9x/NT

ASIDE includes the **SlickEdit™** state-of-the art programmer's editor, with advanced features that include:

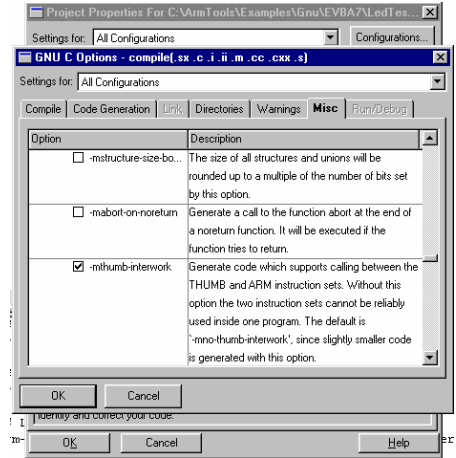
- Configurable language-specific color codin
- Multiple file and directory search and replace
- **DIFFzilla™** to view differences between source files, directories, source trees or symbols
- Version control management interface to all popular version control packages
- Context Tagging™: Auto List Class Members and Function Parameter Info
- Symbol Referencer and Class Browser

The **ASIDE** Integrated Development Environment helps you to configure the GNU GCC ARM Compiler and Linker with easy-to-use dialogs.

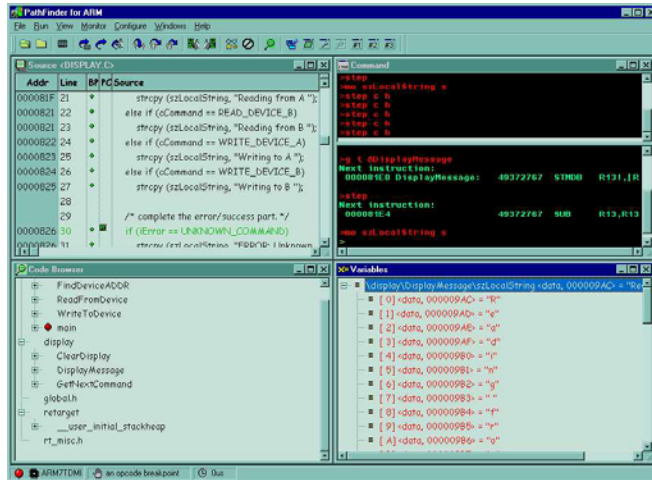
All Compiler, Linker and Debugger options are set-up using AsIDE.

AsIDE automatically creates and maintains a Make-file for your project; you can also import a Makefile (GNU text format) from an existing project.

The AsIDE Programmer's Text Editor features syntax-coloring for the C, C++ and MIPS-assembly languages. Keywords, instructions, variables and comments are highlighted in distinctive colors.



PathFinder Source Debugger for ARM



PATHFINDER is the Source Debugger and user interface for all Ashling ARM™-architecture debug products, including the Ashling **VITRA**, **GENIA** and **OPELLA** hardware Emulators and ARM's ARMulator™™ Instruction-Set Simulator.

PATHFINDER provides multiple user-configurable windows, point-and-click, drag-and-drop, hover help and hover data display, splitter windows, menu-bar, button, hot-key and script (macro)-file controls.

PATHFINDER supports all third party ARM™ toolsets including Ashling AsIDE, ARM Ltd.'s ADS, GNU, Green Hills Software, Wind River Systems (Diab Data) and all other ELF/DWARF compliant compilers

PATHFINDER features include:

- Full C and Assembly source level debug support including step-into, step-over and step-out-of
- Built-in Code Browser allowing rapid navigation of application source code
- Call Stack (Backtrace) window shows current function stack with optional parameter display
- Inline-editable Memory, Register and Variable windows
- Changed memory and variable values are highlighted when program halts
- Integrated Trigger setup and Trace viewing for **VITRA** Networked Emulator with Trace
- Powerful script language to control, monitor and log all Emulator functions

Order Codes

Product	Order Code
PathFinder Debugger for ARM™	PF-ARM
AsIDE Integrated Development Environment for ARM™	ASIDE-ARM

ARM and ARMulator are trademarks or registered trademarks of ARM Ltd.

DS268 V2U

Ashling Microsystems Ltd. is Certified to EN ISO 9001, NSAI Registration No. M619.

Ashling Microsystems Inc.
18612 Devon Avenue,
Saratoga, CA 95070-4646

Tel: (408) 884 3020
Fax: (408) 884 3026
Email: sales.usa@ashling.com

Ashling Microsystèmes
2, rue Alexis de Tocqueville
Parc de Haute Technologie
92183 Antony Cedex, France
Tel: 01.46.66.27.50
Fax: 01.46.74.99.88
sales.fr@ashling.com

Ashling Microsystems Ltd
Intec 2, Wade Road
Basingstoke
Hants. RG24 8NE, U.K.
Tel: (01256) 811998
Fax: (01256) 811761
sales.uk@ashling.com

Ashling Microsystems Ltd
National Technological Park
Limerick
Ireland
Tel: +353-61-334466
Fax: +353-61-334477
sales.ie@ashling.com

Ashling Microsystems Ltd reserves the right to alter product specifications at any time and without notice

Distributors in Austria, Belgium, China, Finland, Germany, Hong Kong, India, Israel, Italy, Korea, Malaysia, the Netherlands, Norway, Singapore, Spain, Sweden, Switzerland, Taiwan and Turkey.

www.ashling.com

